

VersaPad® PS/2 Data Sheet

PS/2 Touchpad for Mousing Applications

Features and Benefits

- Requires no additional driver
- Tap for left-click
- Double tap
- Tap and drag
- Drag edge lock
- Border scroll
- Actuator can be a stylus, a finger, or a gloved hand
- Horizontal scroll (with driver)

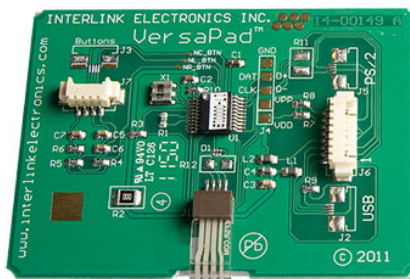
Description

The Interlink Versapad® touchpad is Interlink's mousing solution for OEM and rugged applications. The module's tough moisture resistant surface can be used with a finger, stylus, or glove; even in harsh environments.

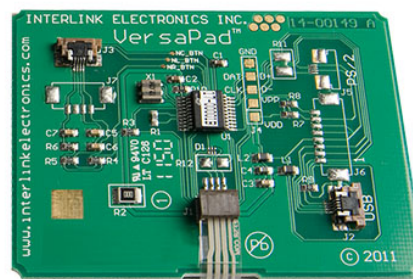
The VersaPad PS/2 will attach as a 2 button mouse, or a 3 button scroll mouse using the native Operating System's mouse driver. A Hardware Development Kit is available. Call us to order at 805-484-8855

Some Applications

- Industrial Computers
- Rugged/Military Notebook Computers
- Desktop Keyboards
- Handheld PCs
- Digital Media Players



Header Version
(board to wire)



FFC Version

VersaPad® PS/2 Data Sheet

PS/2 Touchpad for Mousing Applications

Device Characteristics

Overlay Color	Dark Gray, Pantone 425C
Actuation Force	.05N-.3N (5g – 30g)
Weight	15 grams or less
Operating Temperature Performance	Functional before, during, and after exposure to the below conditions:
Cold Dry	-20°C <=5%RH for 96 hours
Cold Humid	10°C 95%RH for 96 hours
Hot Dry	50°C <5%RH for 96 hours
Hot Humid	60°C 95% for 96 hours
Storage Temperature Performance	Functional after 96 hours of exposure to the below conditions:
Cold Dry	-40°C <=5%RH
Hot Dry	70°C <=5%RH
Hot Humid	70°C 95%RH
Thermal Shock	Functional after 20 cycles of -40°C to 70°C with a 30 minute dwell time and 5 minute transitions
Lifetime Durability	>5 million stylus strokes at -150g+/-10g At +23°C and +°70
Standing Load Durability	Vertical static load 1kgf max for 1 hour
Tap Durability	>1,000,000 cycles at 1kgf/silicone finger/4Hz At +23°C and +°70
Drop	Dropped from 122cm (48 in.) onto concrete
Mechanical Shock	Comparable to MIL-STD-202, 80G accelerated in 11 msec
Mechanical Vibration	Comparable to MIL-STD-202, Method 204, Condition A
Altitude – Operating 10,000 ft	Functional before, during, and after exposure to altitude pressure simulation in vacuum (1 hour)
Altitude – Storage 30,000 ft	Functional before, and after exposure to altitude pressure simulation in vacuum (1 hour)
UL	All materials UL grade 94 V-1 or better
RoHS	Compliant
Stylus recommendations:	
Material	Acetal or Teflon
Minimum radius of tip	1.5mm
EMI	See notes from PS
ESD	See notes from PS

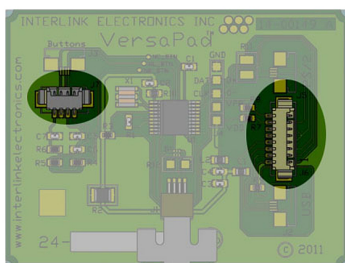
VersaPad® PS/2 Data Sheet

PS/2 Touchpad for Mousing Applications

Connector Options

Header

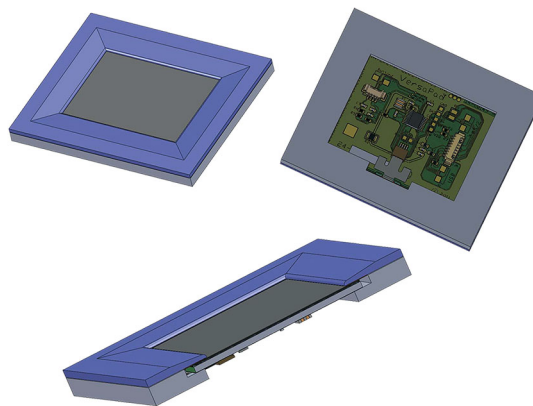
One connector option for the VersaPad is to use wire to board header connectors. The J7 header (Molex #53261-0471) is used for connecting external mouse buttons, the J6 (Molex #53261-0871) is the PS/2 communication header.



Application Information

VersaPad Module Bezel Mounting Concept

A general bezel mounting method is one possible way to mount the VersaPad Module



Header Wire and Cable Options

- 12" Wire Cable Harness, PN 14-16576
- PS/2 Cable Assembly, PN 14-00053
- PS/2 Cable Assembly with Strain Relief, PN 14-00225

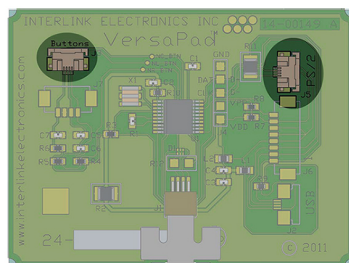
FFC

The VersaPad is also available in a Flat Flex Cable (FFC) connector option. The FFC is used in two places: the J3 for buttons, and the J5 for the PS/2 communication.

Manufacturer: FCI

Part Number: SFV4R-1STE1LF

Refer to the manufacturer's datasheet for more information.



Bezel Concept Critical Dimensions

Indicated are the critical dimensions associated with the VersaPad Module

